

## **THIS INFORMATION IS ONLY FOR YOU THAT WANT TO ACCESS UNIS SERVERS FROM THE “OUTSIDE”.**

- **If you are connected to the employees network, the student network or the network in Nybyen, you don't have to use VPN to map up shares on UNIS servers. Please jump to page 4 of this document.**
- **If you are out travelling, or connected to our guest network, you have to use VPN to get access. Please continue reading.**

1: Download the VPN client for your system. From our website.

### **HOW TO ACCESS SHARED FOLDERS AT UNIS FROM YOUR OWN PC**

• [How to access common shares and private home dir. from lap top](#)

• [VPN - How to access UNIS resources from "outside"](#)

• [Download Cisco VPN Client for Windows \(7og 8 and 8.1\)](#)

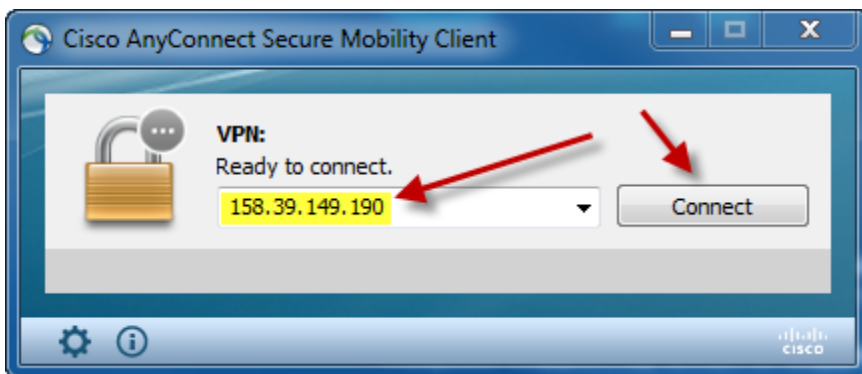
• [Download Cisco VPN Client for MAC](#)

2: UnZip / Extract the installation file to a location on your system.

3: Install the client

4: Start the Cisco AnyConnect Secure Mobility Client

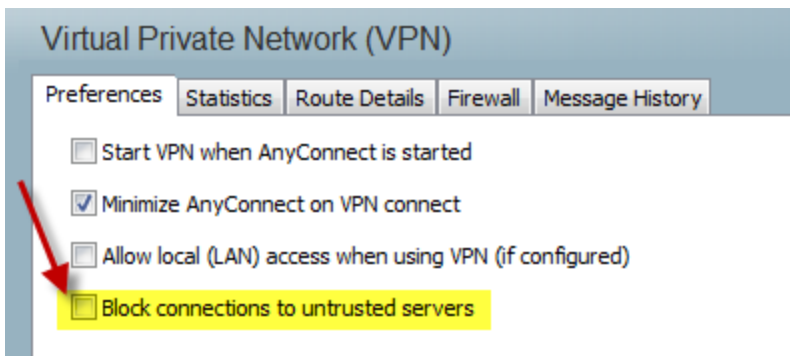
5: Connect to 158.39.149.190



6: The first time you are using this client you will see this warning:



7: Click "Change Settings" and uncheck the "Block connections..."

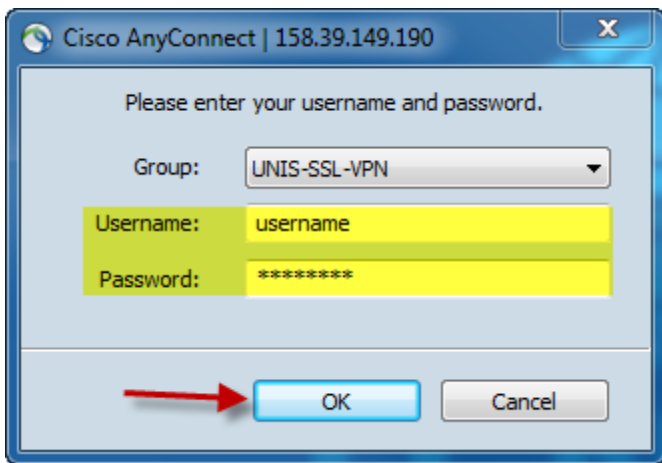


Just CLOSE the window (there is no save or back button).

8: Try to connect once more. Now you will see a different warning.



9: Enter your UNIS username and password. (You don't need @unis.no or UNIS/ here.)



Then you are connected and can connect to network drives shared on the UNIS servers.


How to connect to network drives is explained on the next pages.

## How to map (connect to) a network drive in Windows7

**(MAC – users – please go to the end of this document.)**

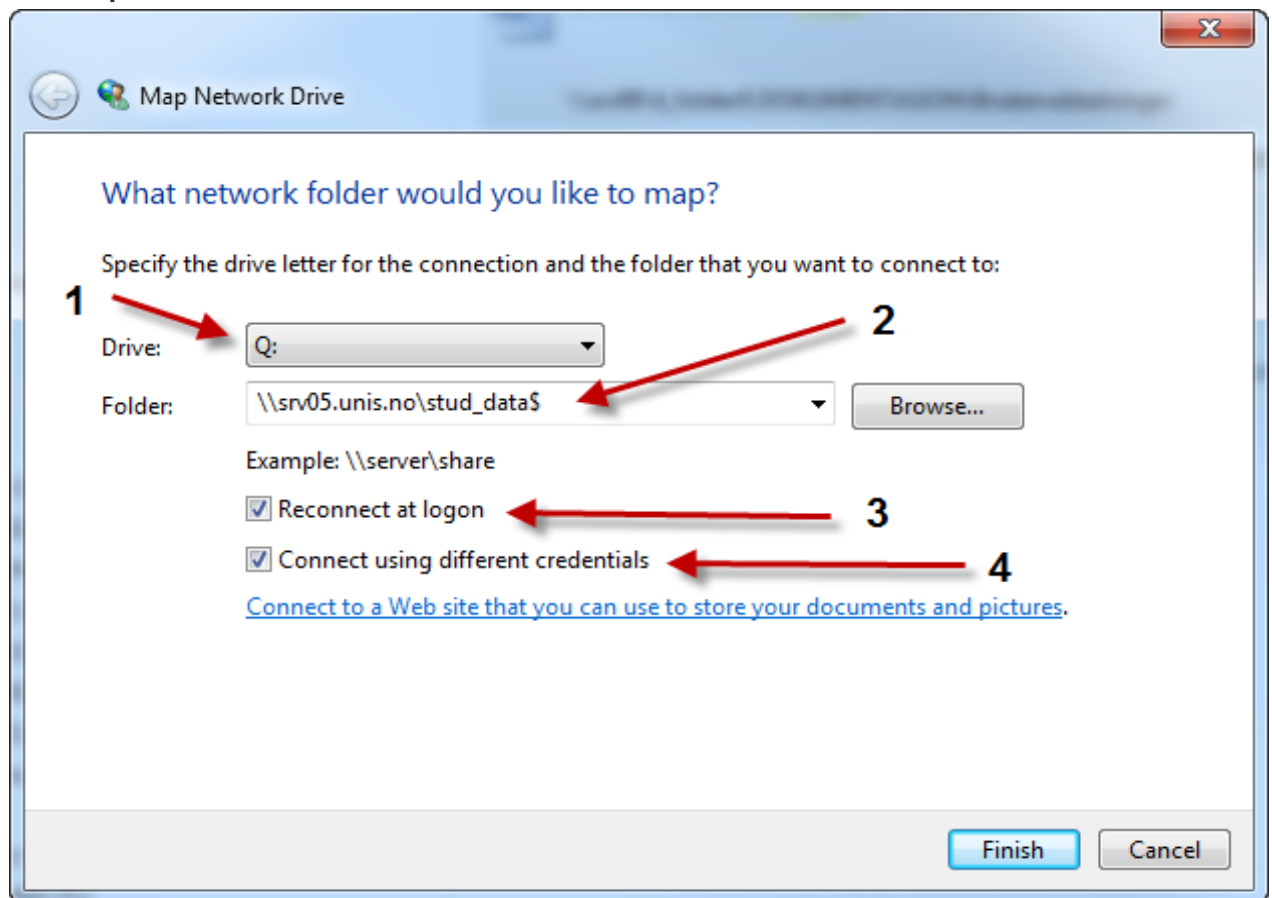
When you connect to a shared folder or computer on a network (also called *mapping* a network drive), you can get to it from Computer or Windows Explorer without having to look for it or type its network address each time.

1:

Open Computer by clicking the **Start** button , and then clicking **Computer**.

2:

Click **Map network drive**.



*The Map Network Drive dialog box*

3:

In the **Drive** list, click a drive letter.

You can choose any available letter.

4:

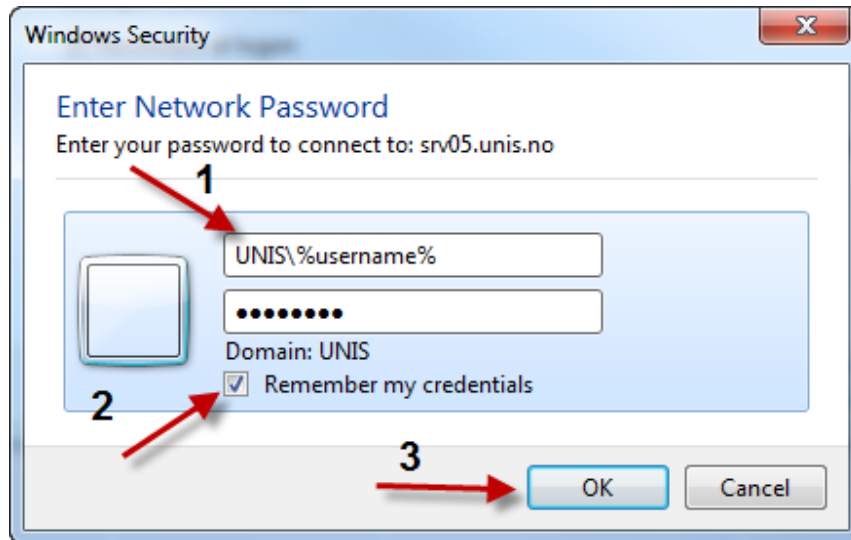
In the **Folder** box, type the path of the folder or computer (see standard shares below).

5:

To connect every time you log on to your computer, select the **Reconnect at logon** check box.

6:

FINISH



7:

Enter your UNIS username. Remember UNIS\ before your username. Also your UNIS password.

8:

If you want the laptop to be able to reconnect automatically every time you are connected to the UNIS network you have to check the "Remember my credentials".

9:

OK

**At UNIS we have these standard shares:**

Employees only:

[\\srv07.unis.no\ansatt\\_felles\\$](\\srv07.unis.no\ansatt_felles$)

[\\srv07.unis.no\ansatt\\_home\\$\"your-user-name"](\\srv07.unis.no\ansatt_home$\"your-user-name")

All:

[\\srv05.unis.no\stud\\_data\\$](\\srv05.unis.no\stud_data$)

Students only:

[\\srv05.unis.no\stud\\_home\\$\"your-user-name"](\\srv05.unis.no\stud_home$\"your-user-name")

## For MAC:

Connect to Eduroam, and make sure to connect with you UNIS mail. OR connect to the wired network inside the Research Park, Unis Guesthouse or Nybyen.

Open Finder

Press cmd ⌘+K

Insert this as server address: `cifs://srv05.unis.no/stud_data$`

OR one of the others listed on the previous page.

Connect.