

Date created	13 August 2010
Created by	Heinrich Eggenfellner
Date last revised	13.08.2010
Revised by	Heinrich

Connecting to the Wireless Network at UNIS – Windows 7

REMARK: This information is ONLY for UNIS-related people. To connect to the wireless network that is provided by NP, Svalbard Museum or Svalbard Reiseliv you have to talk with them.

There is a wireless network covering the whole inside of the “Forskningsparken” building.

Prerequisites in order to connect to this wireless network:

- You need a relatively new computer with wireless capabilities.
- You need to have a valid network account provided by UNIS. All employees, students and guest lecturers get this when arriving at UNIS the first time.
- You should make sure you have up to date anti-virus software and a personal firewall running on your computer.

This is a guide on how to set up your wireless laptop to access the network at UNIS. The network is named **SSIDUNIS**. It is not visible before you set up your computer with this SSID/network name.

When the connection is up and running you can connect to printers and shared folders as explained in other documents from us, posted on the UNIS web page in the IT Services section. Your access rights depend on your status (Student, Employee, or Guest lecturer).

This guide is based on Windows 7. It might look very similar with Windows Vista. For Windows XP please see the other document on this same website “Connecting to the Wireless Network at UNIS – Windows XP”.

Control Panel

Search Control Panel

Adjust your computer's settings

View by: Category

- System and Security**
Review your computer's status
Back up your computer
Find and fix problems
- Network and Internet**
View network status and tasks
Choose homegroup and sharing options
- Hardware and Sound**
View devices and printers
Add a device
Connect to a projector
Adjust commonly used mobility settings
- Programs**
Uninstall a program
- User Accounts and Family Safety**
Add or remove user accounts
Set up parental controls for any user
- Appearance and Personalization**
Change the theme
Change desktop background
Adjust screen resolution
- Clock, Language, and Region**
Change keyboards or other input methods
- Ease of Access**
Let Windows suggest settings
Optimize visual display

Click here

Network and Internet > Network and Sharing Center

Search Control Panel

View your basic network information and set up connections

See full map

HEINRICH-HP (This computer) UNIS.no Internet

View your active networks Connect or disconnect

UNIS.no
Work network

Access type: Internet
Connections: Local Area Connection

Change your networking settings

- Set up a new connection or network**
Set up a wireless, broadband, dial-up, ad hoc, or VPN connection; or set up a router or access point.
- Connect to a network**
Connect or reconnect to a wireless, wired, dial-up, or VPN network connection.
- Choose homegroup and sharing options**
Access files and printers located on other network computers, or change sharing settings.
- Troubleshoot problems**
Diagnose and repair network problems, or get troubleshooting information.

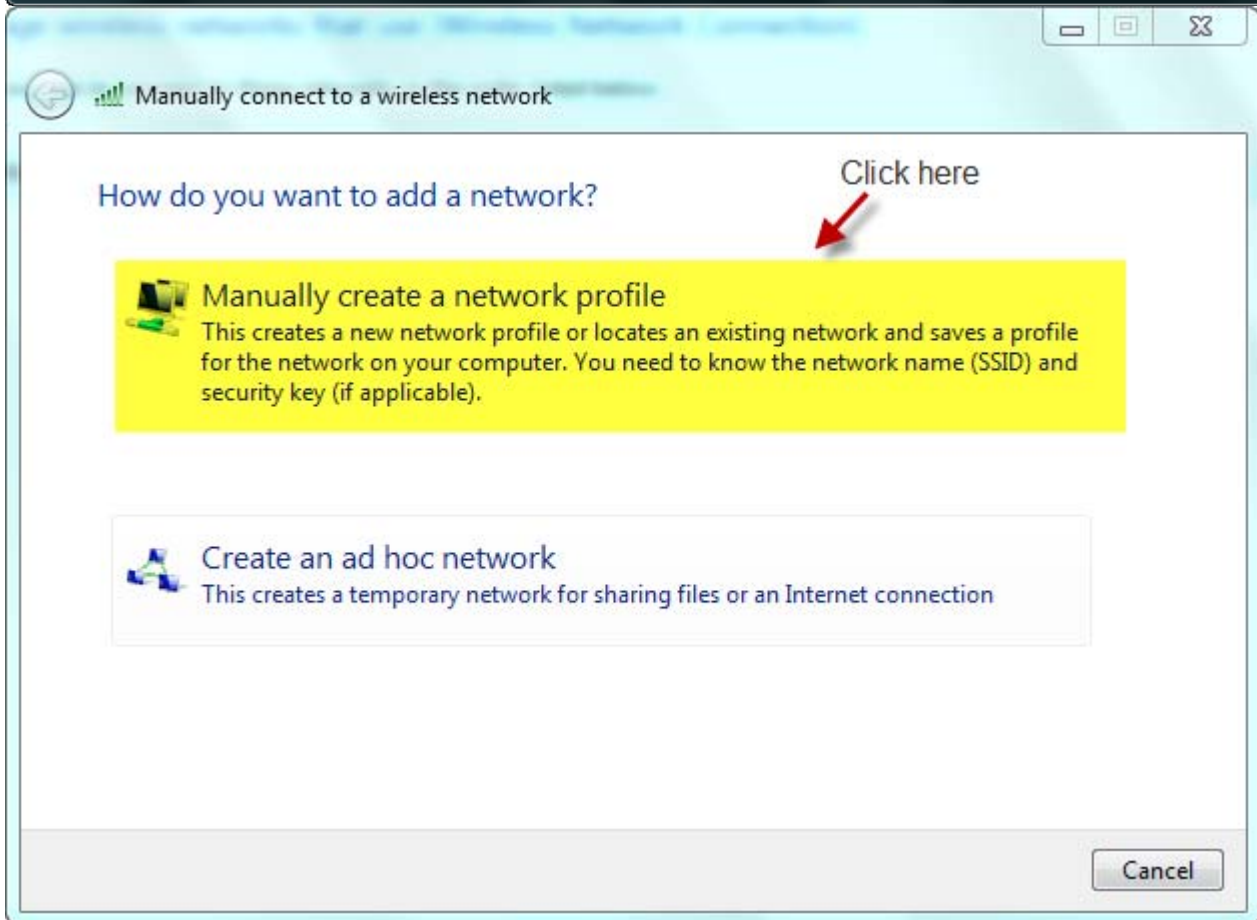
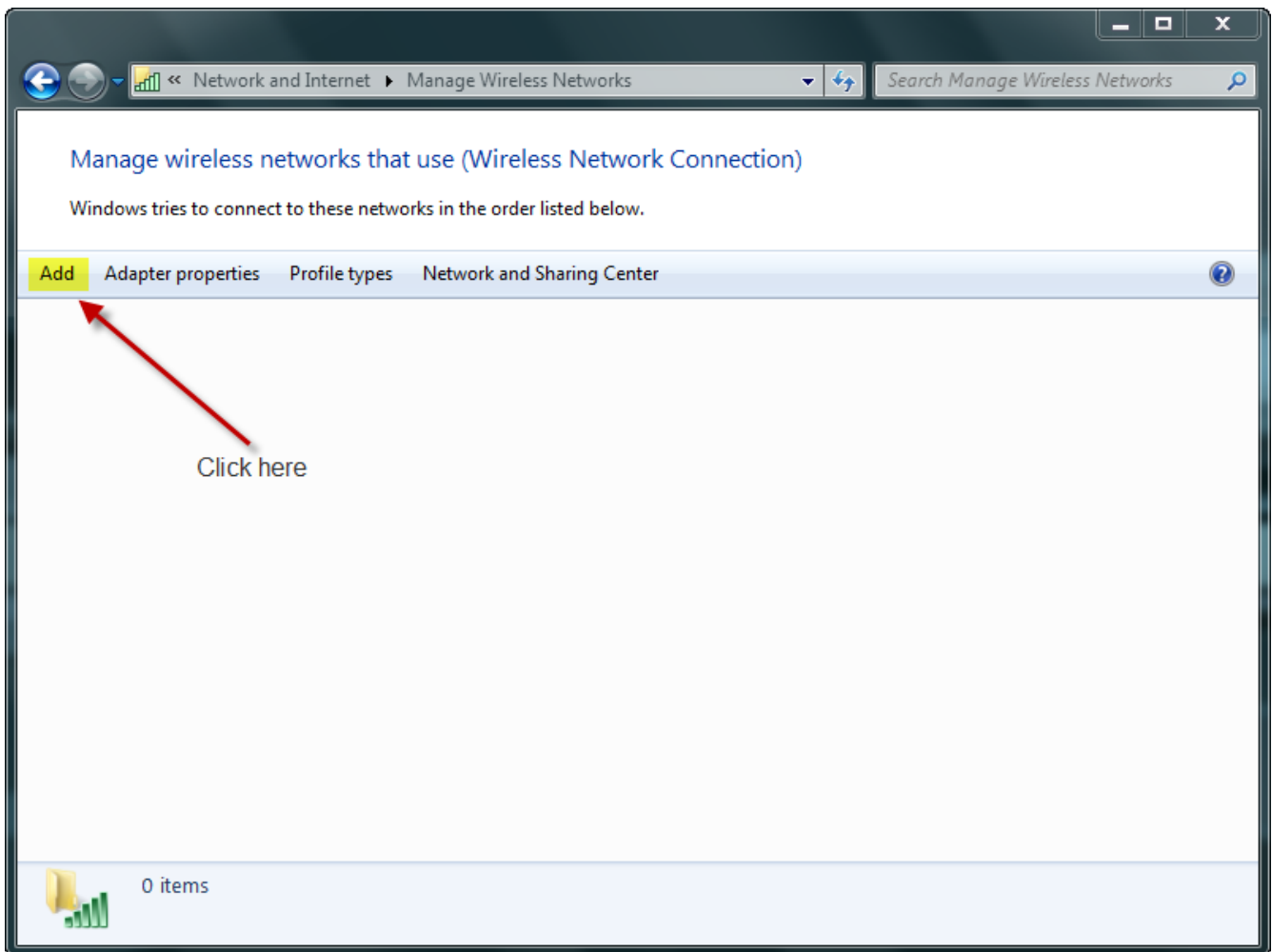
Click here

Control Panel Home

- Manage wireless networks**
- Change adapter settings
- Change advanced sharing settings

See also

- HomeGroup
- Internet Options
- Windows Firewall



Manually connect to a wireless network

Enter information for the wireless network you want to add

Network name: ← 1

Security type: ← 2

Encryption type:

Security Key: Hide characters

Start this connection automatically

Connect even if the network is not broadcasting

Warning: If you select this option, your computer's privacy might be at risk. ← 4

3

Next Cancel

Manually connect to a wireless network

Successfully added SSIDUNIS

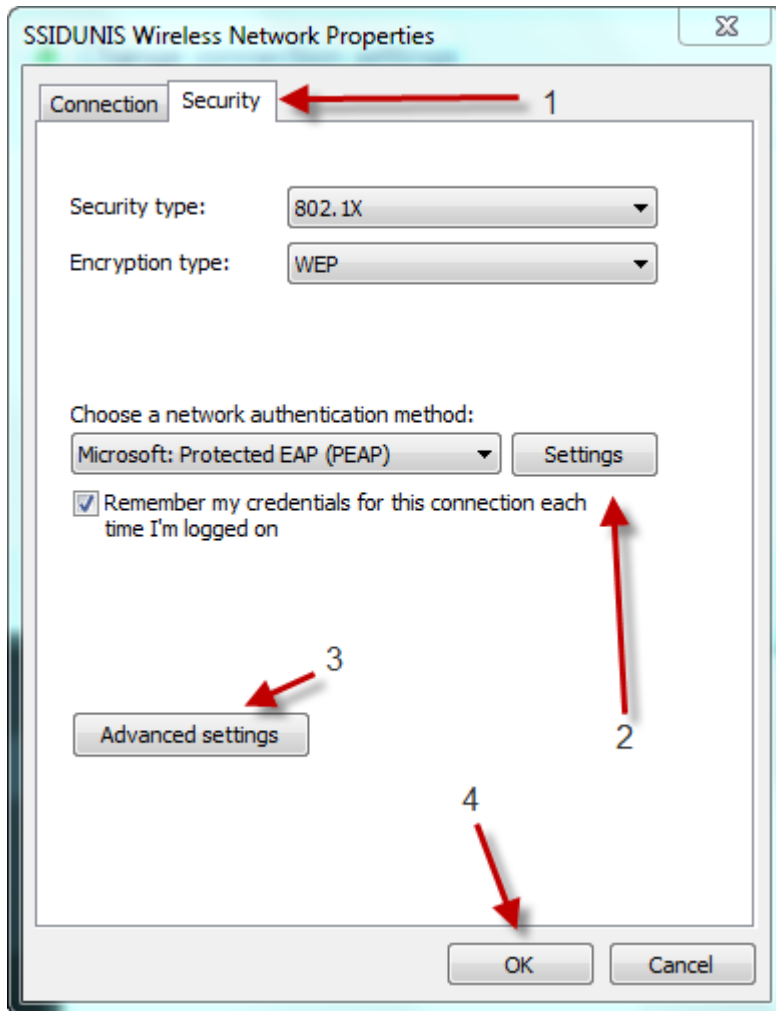
→ Change connection settings
Open the connection properties so that I can change the settings.

Click here

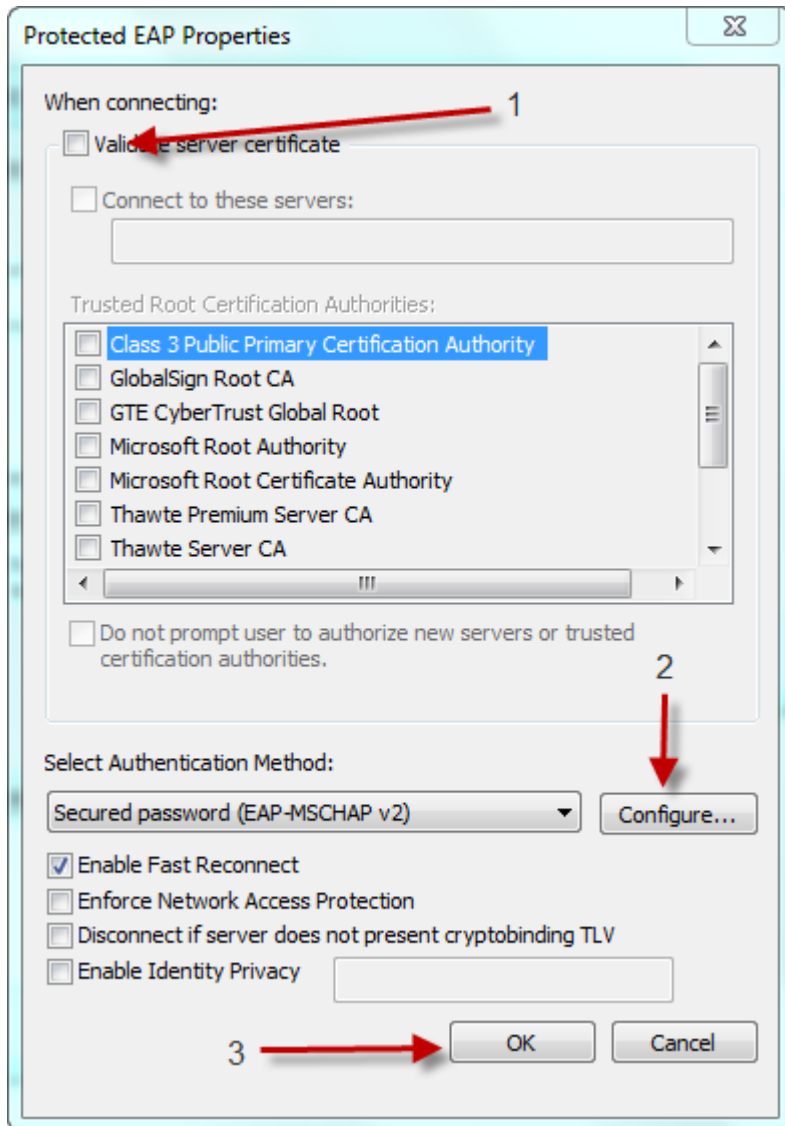
Close

THE FOLLOWING DIALOG BOX IS OPENING.

1. CHOOSE THE SECURITY TAB. MAKE SURE THE SECURITY TYPE AND ENCRYPTION TYPE ARE AS YOU SEE BELOW.



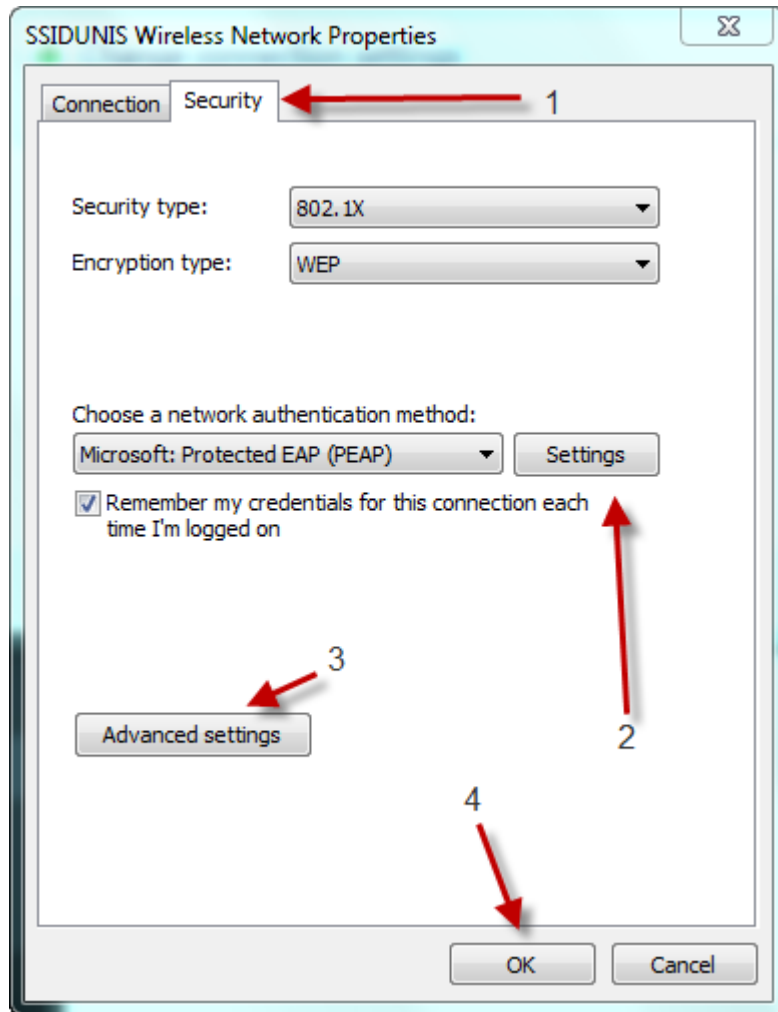
2. CLICK ON THE SETTINGS BUTTON. THE FOLLOWING BOX IS OPENING:



1. MAKE SURE YOU DISABLE THE "VALIDATE SERVER CERTIFICATE"
2. CLICK ON THE CONFIGURE BUTTON. THE FOLLOWING BOX IS OPENING:



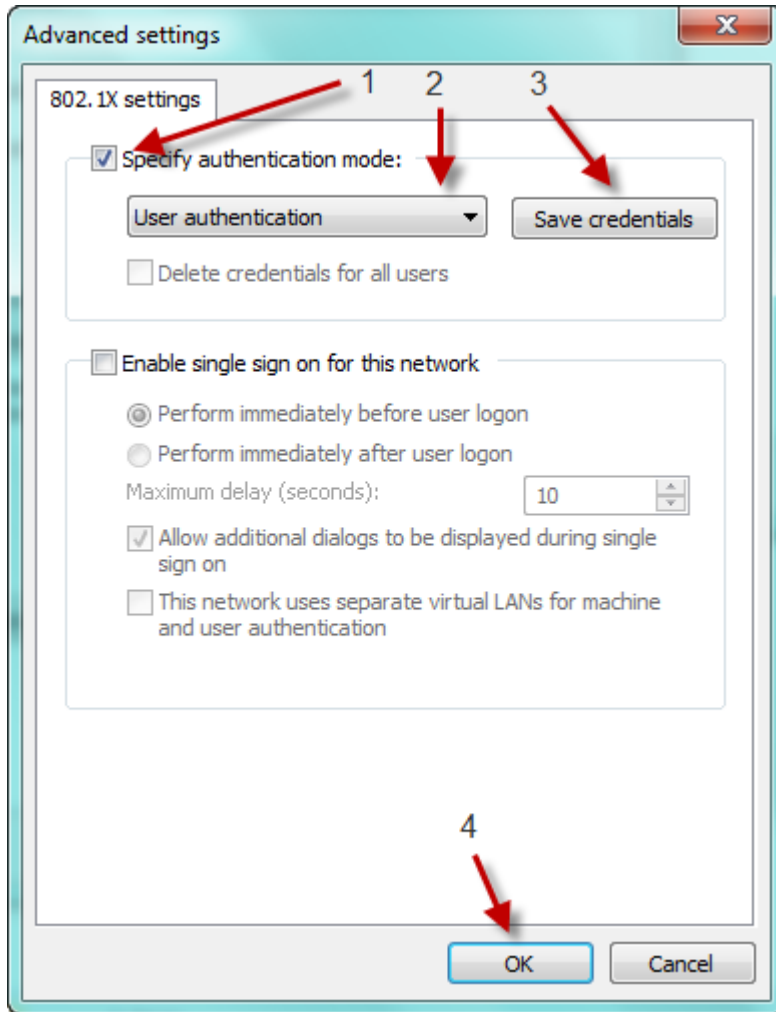
CLICK OK TWICE TO GET BACK TO THE FOLLOWING DIALOGBOX:



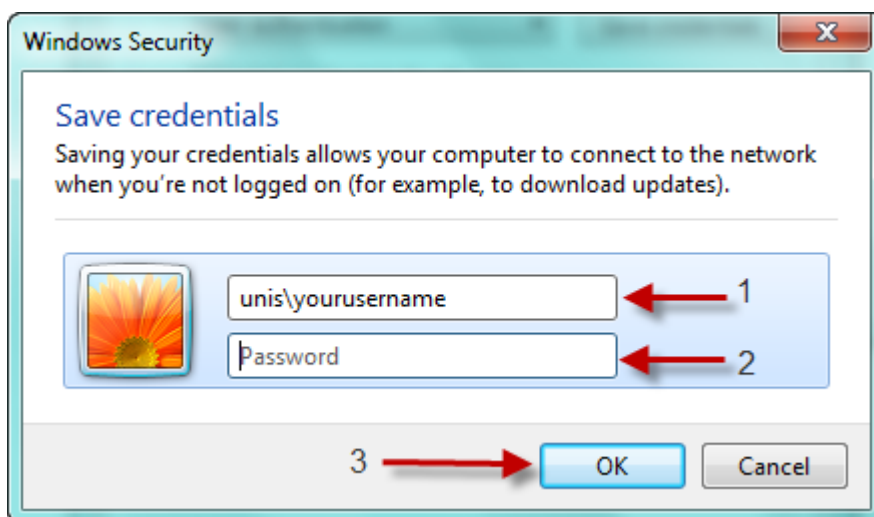
3. CLICK ADVANCED SETTINGS.

THE FOLLOWING BOX IS OPENING:

1. ENABLE THE “SPECIFY AUTHENTICATION MODE”

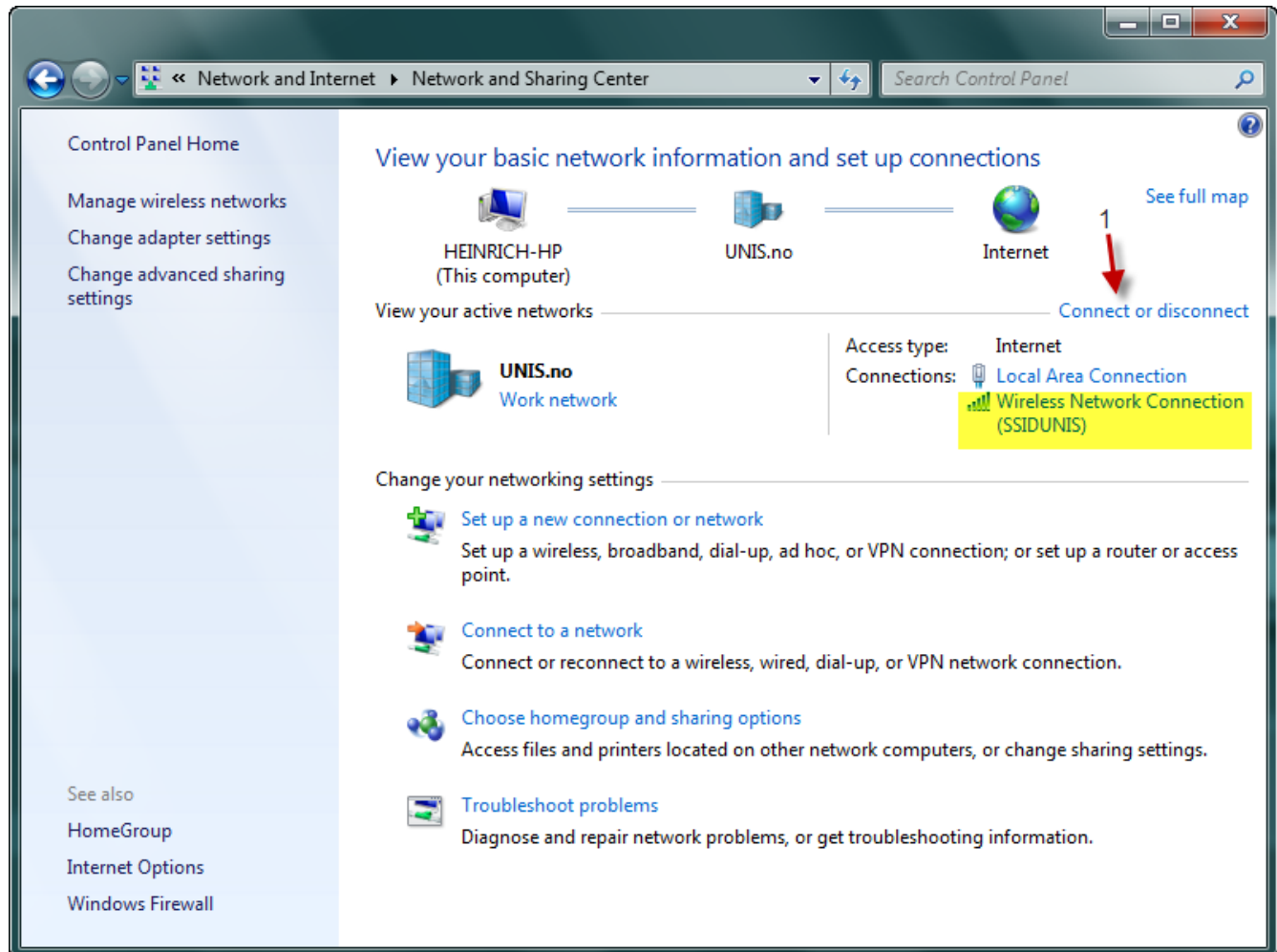


2. CLICK THE USER AUTHENTICATION BUTTON. THE FOLLOWING BOX IS OPENING:



3. ENTER YOUR INFORMATION. CLICK OK SEVERAL TIMES TO CLOSE ALL DIALOG BOXES. DONE.

TO CHECK YOUR CONNECTION YOU OPEN THE NETWORK AND SHARING CENTER. HERE YOU NOW SHOULD SEE THE CONNECTION TO THE WIRELESS NETWORK SSIDUNIS.



1. IF YOU CLICK THE CONNECT OR DISCONNECT LINK THIS SHOW UP:

